

SKATEBOARDS

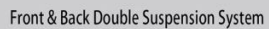
Overview of Available Scooters

Overview of Available Scooters

Place of Origin:	Guangdong, China (Mainla...	Brand Name:	Neutral or OEM
Power:	300w	Voltage:	36v
Charging Time:	4-6 hours	Foldable:	Yes
Tire Size:	6 inch	Battery:	4.4Ah/6.6Ah/7.8Ah
Max load:	150KG	Max climbing angel:	25 degree
Front headlight:	Atomphere LED light	Rear light:	Solar rear light
Bluetooth:	Yes	Color option:	Black, White

Similar engine to rental
with smaller wheel base

Pricing gets tight here, because these scooters get sold big box retailers. Eyeballing 250W - 300W ~\$350 - \$450

[illegible]

Front wheel
high strength suspension

Back wheel
Spring shock absorption

a break through in electric scooter industry,
more green & intelligent travel



gear 1 for practice,2 for comuting,3 for sport

gear 1 for practice,2 for comuting,3 for sport

personal data management

smart-self fault detection

function control



500W, 13aH Removable Battery, 48V ~\$350 (2018 Model, US Warehousing)

This is the top end of what the rental companies are using (San Francisco, because of terrain)

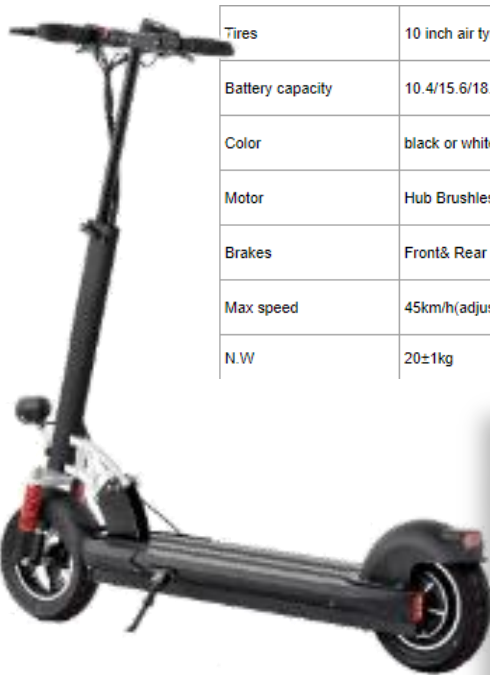
Comp on Amazon
~\$1,415 (although,
it's got a lithium
battery)



Motor:	Brushless 350/500W
Battery:	36V10.4Ah/48V13AH Li-ion
Max Load:	150KG Folding Electric Scooter
Tyre:	9 Inch Electric Scooter
Brake:	Rear Disc
Max Loading:	150Kgs
Range:	>30-45km

Pack size:	1115*260*440mm
Net Weight/Gross Weight:	16/18kgs
Charge Time:	3-4hours
System:	3 Speed
Certification:	CE ROHS FCC
Frame material:	Forged Aluminum
Top Speed:	38km/h





Tires	10 inch air tyres
Battery capacity	10.4/15.6/18.4/21ah
Color	black or white
Motor	Hub Brushless Motor
Brakes	Front& Rear Disc-Brakes
Max speed	45km/h(adjustable)
N.W	20±1kg

Carton size:	125*31*5*38.5
Battery voltage	48/52V
Distance	Depends on battery
Motor power	500W
Suspension	Front suspension
Max load	120kg
G.W	23±1kg

500W, 18aH 52V, Front/Rear Disc Brake ~\$350 (2018 Model, US Warehousing)

Lots of gadgetry. But same basic motor. Good speed

Comp on Amazon ~\$1,415
(although, it's got a lithium battery)

Aluminum Alloy Material
Sturdy And Durable



Lithium battery

Long life
stable performance



spring shock absorption
reduce bumps
ride more comfortable



Aluminium alloy stand
Strong and durable



Beautiful
Comfortable
Convenient



Speed display
Battery electric quantity
Time display
Accumulated distance
Numerical value display
TIME TRIP ODO
8888.8
A single mileage



Basic version

Battery capacity **10 AH**
Driving distance **35 KM**

Standard version

Battery capacity **15 AH**
Driving distance **45 KM**

Deluxe version

Battery capacity **18 AH**
Driving distance **55 KM**

Noble version

Battery capacity **21 AH**
Driving distance **65 KM**



Brake lights
Left and right taillights



Two colors option:

○ white
● black

powerful motor
good climbing
performance



10 inch tires
explosion-proof anti-wear


2000W, CE Approved, 60V – Value Buy ~\$375 (2018 Model, Top Supplier)



For what it's worth, this is probably your best value. Proven, workhorse motor. Lead acid battery, wooden deck, 12 inch tires. Suspension looks funky, but it eliminates a lot of the "rattle" you'll find above 25mph with cheaper models (this will go 40mph very comfortably)

[Comp on Amazon ~\\$1,299 \(although, it's got a lithium battery\)](#)

60V/20A lead acid battery
2000W brushless motor and controller
12"
wooden deck
Battery life:500times
charging time:6-8H
Colour: red, black,blue,green,silver,orange,pink,yellow
Rang:55KM
Max speed:60KM/H



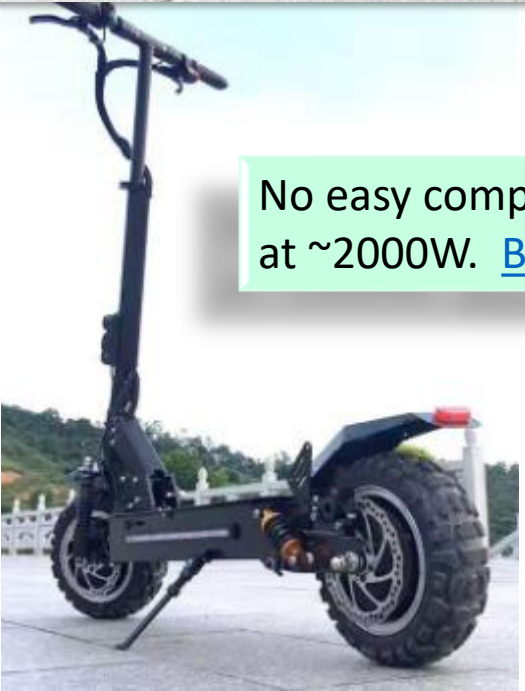
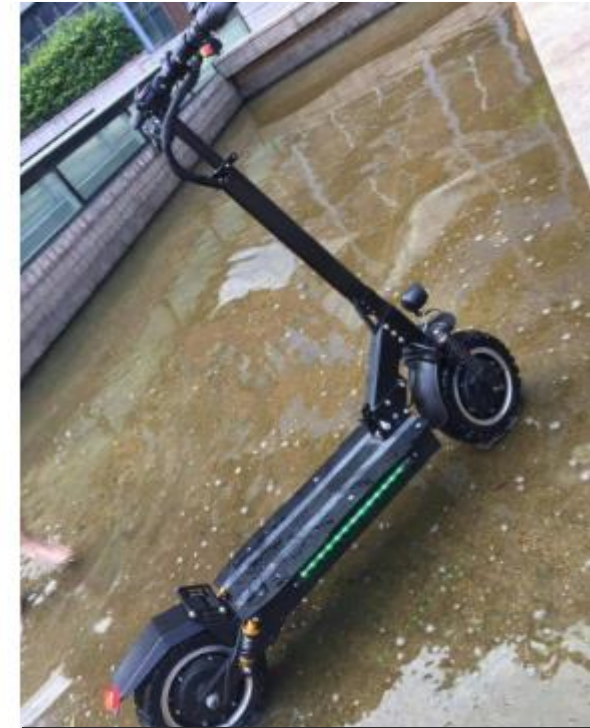
2000W Dualtron Folding Scooter

~\$630 (2018 Model, Top Supplier)

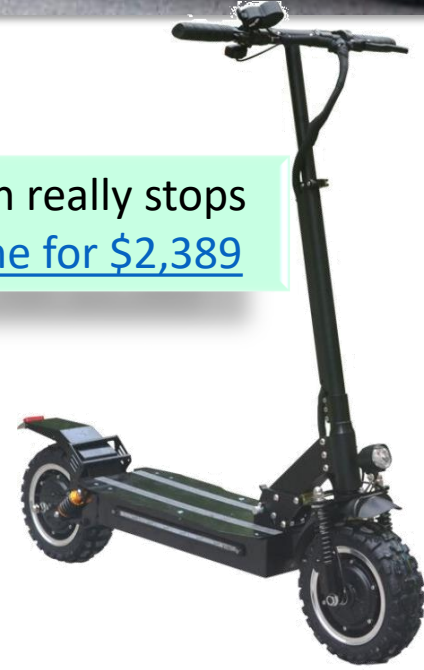
LOOKS OVERPRICED

For what it's worth, this is the best one on the market. Proven, workhorse motor. Suspension looks funky, but it eliminates a lot of the "rattle" you'll find above 25mph with cheaper models (this will go 40mph very comfortably)

3200W, 60V, 11 in Tires
~\$750



No easy comps on this. Amazon really stops at ~2000W. [But, Daibot sells one for \\$2,389](#)



Name	11 inch Electric Scooter
Open Size	118x52x128cm
Folded Size	118x52x45cm
Max Speed	About 85km/h
Max Load	About 150kgs
Max Mileage	13AH Battery : About 35-40kms 18.2AH Battery : About 50-60kms 23.4AH Battery : About 70-80kms (OEM battery capacity) (test depend on rider's weight(50kgs),flat road conditions,fit speed 50km/h...)
Motor	2400W (2pcs x 1200W) OEM
Battery Voltage	60V
Handle High	108-128cm
Weight	about 28-34kgs
Speed Gears	3Gears (3speed gears)
USP port	yes
Battery Capacity	13Ah/18.2AH/23.4AH (pls choose the one you want) Lithium Battery
Tire Size	11inch inflatable wheels
Damping System	yes
Led Lights	yes
foldable	yes
Rated input voltage	100-240V AC, 50/60Hz
Low battery protection	Power is less than 15% start
Charging time	About 5-8hours
Package	Scooter x1, charger x1

5600W, 60V, 35aH, 11 in Tires ~\$1,169 (55mph and 120KM range!)

No easy comps on this. But, if I were to buy a scooter, this would be it. 11" pneumatic tires are about as safe as they get



	11 inch Electric Scooter, electric scooter adult
Size	135*30*125 cm
d Size	145*30*55 cm
peed	About 85km/h
oad	About 180kgs
ileage	26AH Battery : About 80kms 30AH Battery : About 100kms 35AH Battery : About 120kms (OEM battery capacity) (test depend on rider's weight(50kgs),flat road conditions,fit speed
y Voltage	5600W (2pcs x 2800W) OEM
e High	60V OEM
t	108-128cm
l Gears	about 35-45kgs
ort	3Gears (3speed gears)
y Capacity	yes
ize	26Ah/30AH/35AH (pls choose the one you want) Lithium Battery
ing System	11inch inflatable wheels
ights	yes
ole	yes
input voltage	100-240V AC, 50/60Hz
attery protection	Power is less than 15% start
ing time	About 5-8hours
ge	Scooter x1, charger x1



Electric Kick Scooter

\$2,900 - \$2,980

This is a function-specific item for the guys that are effectively running them like moto-cross bikes



Battery	96V 20.8Ah
Motor	DC brushless middle motor
Transmission	Belt drive
Max. Power	8000w
Acceleration Time	0-72km/h 4.3S
Frame	Aluminum alloy
Brake	F&R Hydraulic Disk brake
Tire	145/70 -6" vacuum tire
Lighting	F&R high light LED
Max. Speed	71km/h
Max. Range	85km
Max. Loading	150kg
N.W	41kg
Charging time	4.8h
Size	136x68x116cm/ 136x68x51 (folded)



Comparable Sale



\$4,495



I spend WAY TOO MUCH TIME looking at new
Designs from China.

#7 THINGS THAT LOOK GOOD

I'm not sure whether I could sell any of this
shit. But, I'd love to ride them. So, depending
How this first batch rolls, maybe I think about in 2010



VERSION	STANDARD	PRO
MAX LOAD	120Kg	120Kg
BATTERY	China famous brand	China famous brand
MILEAGE	40-60 KM	70-90KM
CURRENT	AC110-220V 50-60Hz	AC110-220V 50-60Hz
WEIGHT	68 KG	68 KG
CAPACITY	48V16ah	48V20ah
MOTOR POWER	48V 800W	48V 800W
WATERPROOF	IP54	IP54
MAX SPEED	60Km/h	60Km/h
SIZE	224*110*89CM	224*110*89CM

I'm gonna buy 2 or 3 of these once we re-up our inventory (probably post Christmas) I have no idea what this is. But, it's cheap, goes 60mph and we could do some creative design here. Tricked out, we could get \$3K for this.

Something Funky... It also goes 55mph
\$385 - \$759



A Motor Scooter that Looks Like a Tomahawk

\$1,250 (and, we could gear it to run 80mph)

- This is my “stretch” The Tomahawk is a concept bike where Dodge took their Viper engine and dropped it onto a motorbike. The result was a bike that theoretically could exceed 500mph. (to date, their riders have only run it to about 200mph, as I understand the engineers are finding “quirks” as the approach 300mph in the wind tunnel)

- I think this could be cool for a kid in college. But, it’s a big bet. Maybe next year



THE PRICE IS NOT A TYPO
\$550 - \$650

What's the specifications of our

Max load	150kg
Max speed	40-60km/h
Endurance mileage	80km
Max climb capability	≤ 25°
Material	Aluminum alloy
Battery	48V 20AH Lithium Battery
Maximum torque	95N/M
Charge time	6-8 hours
Motor power	500w
Working temperature	-10°C~40°C
Net weight	60kg



WHILE THE MOTORS ON THESE TEND TO LAND ON YOUR HEAD WHEN YOU FALL,
YOU GOTTA ADMIT IT LOOKS FUN. **WATCH THE VIDEOS**

\$3,000 (BTW, when you see the advertised on facebook for \$400, it's a scam)

Engine Controller.

The engine is now with the perfect accelerations, decelerations and speed outlets so you get the most stability out of your ride.

Silent Electric Engine.

Lots of energy in a compact space allows you to travel swiftly through the water without the irritant noise created by gas engines.

Waterproof Hatch.

All the batteries, engine controller, chips and the wires are stored in the waterproof hatch. It's easily opened to replace the battery.

Control Performance.

The engine is commanded by the controller in your hand. The power will automatically shut off by simply releasing the lever, if submerged in water.



MY BROTHER SWITCHED TO HYDROFOIL SURFING ABOUT A YEAR AGO AND HASN'T GONE BACK

\$3,000, (He paddles in. Balance tougher, but you're riding underwater waves - once you're up you don't go down)

DON'T KNOW IF YOU'VE SEEN THE
BUT, NEXT TIME YOU'RE IN SO CAL
CAN RENT THESE

BACKPACK LINK

WATCH THE VIDEOS

CHRISTMAS PRESENT FOR STEVE

FINALLY WATCH THIS LADY – HOLY CRAP

\$2,500



I'M OFF-TOPIC HERE, BUT, THESE ARE SOME SHOTS FROM LAST BUS DEV EVENT IN SO.CAL

- ✓ They rent them off Dana Point pier
- ✓ Whole thing can get done in 90 min, before anyone even knows you slipped away (at least, that's what I've heard)
- ✓ 1800cc, 325hp, 0 - 60 in less than 4 seconds, 85mph top speed, just throwing it out there...
- ✓ Owner was shut down by DEA last summer. Turns out these things are so fast they can outrun coast guard. So, traffickers were renting them, linking with a larger ship and running them to the shore
- ✓ Run about \$6K on AB
- ✓ Kidding aside, this is my primary client dev activity. So, should you ever find yourself in OC...





Ummmm....
\$550 - \$600

Place of Origin:	Guangdong, China (Mainland)
Brand Name:	SUNNYTIMES
Model Number:	STS-11
Certification:	CE,FC,RoHS
Max speed:	20km/h
Max mileage:	25-30km
Max Loading:	125kg
Max climb capability:	18-25 degree
MaxPower:	1200-1500W
Battery:	Lithium battery
Lifetime of battery:	2-3years
Charging time:	2-3h
Power:	Brushless motor
Voltage:	AC90-240V 50-60H
Height of Padal:	10cm Fordable
Standard Pressure: a	250 kp
Specification of footplate:	11 .5*25in / 16*40 cm
Wheel:	26 inches
Tire:	17in / 43 cm vacuum
N.W:	34kg
G.W:	42k
Dimension:	110*110*51cm
Colors:	As picture



[View larger image](#)